



# **GUNAS RIGS** INDIA PRIVATE LIMITED

**THE COMPLETE DRILLING SOLUTION**

---



**Sony Rigs and Hydraulics Private Limited**  
is now rebranded as  
**Gunas Rigs India Private Limited**

[www.gunasrigs.com](http://www.gunasrigs.com)

# OUR PRODUCTS

## DTH 200 Mini



TECHNICAL DATA	DTH 200 MINI
HOLE DIAMETER	4 ½" to 6 ½"
DEPTH	200 Mtr
MAST	Pull up force - 18108 Kgf Pull down force - 12243 Kgf Reeving Ratio - 1:3s
WATER INJECTION PUMP	Triplex Reciprocating Type
HYDRAULIC PRESSURE	210 Kg/Cm2
HYDRAULIC OIL COOLER	120 / 150 gpm
MAXIMUM TORQUE	500 kg.m2
MAST RAISING CYLINDER	160 mm x 100 mm
AIR LINE LUBRICATOR	25 Liters
COMPRESSOR	600 cfm / 200 psi

TECHNICAL DATA	DTH 300 / DTH 450
HOLE DIAMETER	6 ½" to 8 "
DEPTH	300 - 450 Mtr
MAST	Pull up force - 22712 / 25444 Kgf Pull down force - 11158 / 19673 Kgf Reeving Ratio - 1:3s
WATER INJECTION PUMP	Triplex Reciprocating Type
HYDRAULIC PRESSURE	220 Kg/Cm2
HYDRAULIC OIL COOLER	120 / 150 gpm
MAXIMUM TORQUE	500 kg.m2
MAST RAISING CYLINDER	160 mm x 100 mm
AIR LINE LUBRICATOR	25 Liters
COMPRESSOR	1100cfm / 300psi (or) 1200cfm / 330psi

## DTH 300 / DTH 450



## DTH 600



TECHNICAL DATA	DTH 600
HOLE DIAMETER	6 ½" to 8 "
DEPTH	600 Mtr
MAST	Pull up force - 32142 Kgf Pull down force - 22238 Kgf Reeving Ratio - 1:3s
WATER INJECTION PUMP	Triplex Reciprocating Type
HYDRAULIC PRESSURE	325 Kg/Cm2
HYDRAULIC OIL COOLER	120 / 150 gpm
MAXIMUM TORQUE	500 kg.m2
MAST RAISING CYLINDER	180 mm x 100 mm
AIR LINE LUBRICATOR	25 Liters
COMPRESSOR	1500 cfm / 400 psi

## Easy Loader 300/450/600



TECHNICAL DATA	EASY LOADER 300/450/600
HOLE DIAMETER	6 ½" to 8 "
DEPTH	300 - 450 Mtr
MAST	Pull up force - 22712 / 25444 Kgf Pull down force - 11158 / 19673 Kgf Reeving Ratio - 1:3s
WATER INJECTION PUMP	Triplex Reciprocating Type
HYDRAULIC PRESSURE	325 Kg/Cm2
HYDRAULIC OIL COOLER	120 / 150 gpm
MAXIMUM TORQUE	500 kg.m2
MAST RAISING CYLINDER	160 mm x 100 mm
AIR LINE LUBRICATOR	25 Liters
COMPRESSOR	1100cfm / 300psi (or) 1200cfm / 330psi
ROD HANDLING SYSTEM	Using rope mechanically
LABOUR	3 Labours / Shift

TECHNICAL DATA	AUTO LOADER 300/450/600
HOLE DIAMETER	6 ½" to 8 "
DEPTH	600 Mtr
MAST	Pull up force - 32142 Kgf Pull down force - 22238 Kgf Reeving Ratio - 1:3s
WATER INJECTION PUMP	Triplex Reciprocating Type
HYDRAULIC PRESSURE	325 Kg/Cm2
HYDRAULIC OIL COOLER	120 / 150 gpm
MAXIMUM TORQUE	500 kg.m2
MAST RAISING CYLINDER	180 mm x 100 mm
AIR LINE LUBRICATOR	25 Liters
COMPRESSOR	1500 cfm / 400 psi
ROD HANDLING SYSTEM	Auto Loading Programmed in a PLC System

## Auto Loader 300/450/600



## All in one DTH 300



TECHNICAL DATA	ALL IN ONE DTH 300
HOLE DIAMETER	6 ½" to 8"
DEPTH	300 Mtr
MAST	Pull up force - 22712 Kgf Pull down force - 11158 Kgf Reeving Ratio - 1:3s
WATER INJECTION PUMP	Triplex Reciprocating Type
HYDRAULIC PRESSURE	210 Kg/Cm2
HYDRAULIC OIL COOLER	120 / 150 gpm
MAXIMUM TORQUE	500 kg.m2
MAST RAISING CYLINDER	160 mm x 100 mm
AIR LINE LUBRICATOR	25 Liters
COMPRESSOR	1100 cfm / 300 psi

## DTHR 300/450



### TECHNICAL DATA

### DTHR 300/450

HOLE DIAMETER	6 ½" to 16"
DEPTH	300 - 450 Mtr
MAST	Pull up force - 22712 / 25444 Kgf Pull down force - 11158 / 19673 Kgf Reeving Ratio - 1:3s
WATER INJECTION PUMP	Triplex Reciprocating Type
HYDRAULIC PRESSURE	220 Kg/Cm2
HYDRAULIC OIL COOLER	120 / 150 gpm
MAXIMUM TORQUE	500 kg.m2
MAST RAISING CYLINDER	160 mm x 100 mm
AIR LINE LUBRICATOR	25 Liters
COMPRESSOR	1100cfm/ 300psi ,1200cfm / 330psi
MUD PUMP	6" x 6" / 8" x 6"

### TECHNICAL DATA

### DTHR 600

HOLE DIAMETER	6 ½" to 16"
DEPTH	600 Mtr
MAST	Pull up force - 32142 Kgf Pull down force - 22238 Kgf Reeving Ratio - 1:3s
WATER INJECTION PUMP	Triplex Reciprocating Type
HYDRAULIC PRESSURE	325 Kg/Cm2
HYDRAULIC OIL COOLER	120 / 150 gpm
MAXIMUM TORQUE	500 kg.m2
MAST RAISING CYLINDER	180 mm x 100 mm
AIR LINE LUBRICATOR	25 Liters
COMPRESSOR	1500 cfm / 400 psi
MUD PUMP	10" x 7.5"

## DTHR 600



## Tractor DTH 150



### TECHNICAL DATA

### TRACTOR DTH 150

HOLE DIAMETER	4 ½" to 6 ½"
DEPTH	150 Mtr
MAST	Pull up force - 18108 Kgf Pull down force - 12243 Kgf Reeving Ratio - 1:3s
WATER INJECTION PUMP	Triplex Reciprocating Type
HYDRAULIC PRESSURE	210 Kg/Cm2
HYDRAULIC OIL COOLER	120 / 150 gpm
MAXIMUM TORQUE	500 kg.m2
MAST RAISING CYLINDER	160 mm x 100 mm
AIR LINE LUBRICATOR	18 Liters
COMPRESSOR	600 cfm / 200 psi



## Trolley DTH 150



TECHNICAL DATA	TROLLEY DTH 150
HOLE DIAMETER	4 ½" to 6 ½"
DEPTH	150 Mtr
MAST	Pull up force - 18108 Kgf Pull down force - 12243 Kgf Reeving Ratio - 1:3s
WATER INJECTION PUMP	Triplex Reciprocating Type
HYDRAULIC PRESSURE	210 Kg/Cm2
MAXIMUM TORQUE	150 kg.m2
MAST RAISING CYLINDER	100 mm x 63 mm
DRILL ROD HANDLING	3 Mtr
COMPRESSOR	450cfm / 150psi, 540cfm / 180psi, 600cfm / 200psi

TECHNICAL DATA	XD PILE (EX 50)
HOLE DIAMETER	4 ½" to 6 ½"
DEPTH	150 Mtr
MAST	Available Sizes : 3Mtr, 6 Mtr Pull up force - 15400 Kgf Pull down force - 10570 Kgf Reeving Ratio - 1:3s
PRIME MOVER	Excavator
MAST RAISING CYLINDER	100 mm x 63 mm
COMPRESSOR	1100 cfm / 300 psi

## XD Pile (EX 50)



## XD 50 Blast



TECHNICAL DATA	XD 50 BLAST
HOLE DIAMETER	4 ½" to 6 ½"
DEPTH	150 Mtr( upto 50 Meter Automated Blast Hole Drill )
MAST	Available Sizes : 3Mtr, 6 Mtr Pull up force - 15400 Kgf Pull down force - 10570 Kgf Reeving Ratio - 1:3s
PRIME MOVER	Excavator
MAST RAISING CYLINDER	100 mm x 63 mm
COMPRESSOR	1100 cfm / 300 psi

## Reverse Circulation



TECHNICAL DATA	REVERSE CIRCULATION
HOLE DIAMETER	4 ½"to 6 ½"
DEPTH	300 Mtr
MAST	Pull up force - 22712 Kgf Pull down force - 11158 Kgf Reeving Ratio - 1:3s
WATER INJECTION PUMP	Triplex Reciprocating Type
HYDRAULIC PRESSURE	210 Kg/Cm2
HYDRAULIC OIL COOLER	120 / 150 gpm
MAXIMUM TORQUE	500 kg.m2
MAST RAISING CYLINDER	160 mm x 100 mm
AIR LINE LUBRICATOR	25 Liters
COMPRESSOR	1100 cfm / 300 psi

## TECHNICAL DATA

## CORE 150

HOLE DIAMETER	NQ - HQ
DEPTH	150 Mtr
TRACK	As per customer requirement
PRIME MOVER	Tractor or Rubber Track
MAST	Pull up force - 18108 Kgf Pull down force - 12243 Kgf Reeving Ratio - 1:3s
HYDRAULIC PRESSURE	40 kg.m - 70 kg. m
MUD PUMP	80 LPM
DRILL ROD HANDLING	3 Mtr

## Core 150



## Diamond Core 650



TECHNICAL DATA	DIAMOND CORE 650
DEPTH (DIAMOND CORE)	B-Size - 800 Meters (2625ft) N-Size - 650 Meters (2132ft) H-Size - 400 Meters (1312ft) P-Size - 250 Meters (820 ft)
DEPTH (REVERSE CIRCULATION)	3 ½" rod - 200 meters (656ft) 4" rod - 150 meters (492ft) Rotary - Down Hole hammer 3 ½"rod - 300 meters (984ft)
PRIME MOVER	Truck or Steel track with a deck engine
MAST	Retract force 74.71 KN (16793lb) Pull down force 34.8 KN (7823lb)

## Diamond Core 1250



### TECHNICAL DATA

### DIAMOND CORE 1250

DEPTH (DIAMOND CORE)	B-Size - 1600 Meters (5249ft) N-Size - 1250 Meters (4100ft) H-Size - 800 Meters (2624ft) P-Size - 450 Meters (1476ft)
DEPTH (REVERSE CIRCULATION)	4 ½" rod - 200 meters (656ft) Rotary - Down Hole hammer 3 ½"rod - 300 meters (984ft)
PRIME MOVER	Truck or Steel track with a deck engine
MAST	Retract force 117.71 KN (26454lb) Pull down force 55.45 KN (12462lb)

### TECHNICAL DATA

### DIAMOND CORE 1750

DEPTH (DIAMOND CORE)	B-Size - 2200 Meters (7218ft) N-Size - 1750 Meters (5741ft) H-Size - 1200 Meters (3937ft) P-Size - 900 Meters (2953ft)
DEPTH (REVERSE CIRCULATION)	4 ½" rod - 350 meters (1148ft) 3 ½"rod - 550 meters (1804ft)
PRIME MOVER	Truck or Steel track with a deck engine
MAST	Retract force 181.5 KN (40700 lb) Pull down force 94.4 KN (21206lb)

## Diamond Core 1750



## Special Purpose Drilling



### POLE DIGGER WITH CRANE

The post hole digger is basically tractor drawn implement mounted on the 3 linkage of the tractor. It is driven by tractor P.T.O.; it helps for digging holes for plantation, polo standing, etc.

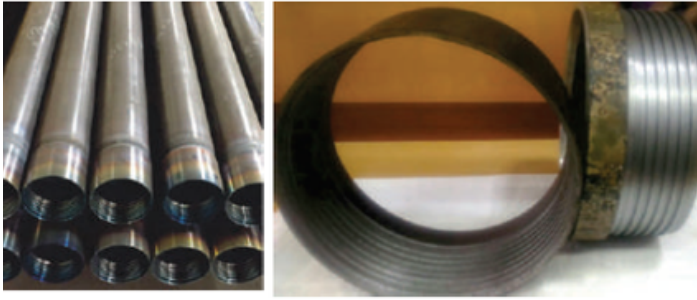
Drill rods are providing with a superior surface finish and tolerance which drastically reduces the risk of scaling from the pipes entering the hammer, a major cause of premature hammer failure. The joints are friction welded to achieve maximum strength, and the threads of the end-pieces are heat treated for optimum durability and strength of the thread profile. Every drill rod processed with induction hardening up to 44 HRC with 3mm depth.

## Drill Rods



MIG Welded 15 HRC, Friction Welded 44 HRC, Available Sizes 2 ½" to 5"

## Temporary Casing / Working casing



1) If thread in coupler side get depreciated or cracked the coupler can be replace by welding for many times

2) Various thickness of temporary casing/ working casing pipes are available

3)The coupler ( Male and Female) are separately available

We manufactures both high Pressure Hammer Valveless Hammers and low Pressure Hammers (VALVE HAMMERS)

TECHNICAL DATA	DTH HAMMER
TYPE	SPECIAL R.K TYPE OF HAMMER (180-240mm)
RANGE	4 " TO 12 " and 3 " TO 8 "
SUITABLE FOR	MISSION-40, MISSION-45, MISSION-50 MISSION-65, MISSION-90, MISSION-100, MISSION-120, JET -117, SD , SHD, SHANKS, 8" GLADIATOR

## DTH Hammer



## DTH Bits



Our company Bits are Manufactured to International specifications, From best Quality Alloy Steel, Machined to High Precision and Supreme Standards.

**Available Sizes : 3" - 32" In Diameter**

**Suitable For** : MISSION-40, MISSION-60,MISSION-80, SD-4, SD-6, SD-8, SD-10, DHD-3.5, DHD-14,DHD-16, DHD-17, DHD-340,DHD-360, DHD-380, QL-40, QL-60, COP-34, COP-42, COP-62, RK3, RK4 Made to Order Bits

ODEX Hammer is generally suggested when the soil formations are too dense for drilling like eccentric drilling operations.

**Available Sizes : 4 3/4" to 12"**

## Odex Hammer & Bits





## Tricone Bits



### Available Sizes :

TC Rock Roller Bits: 4½" to 14 ½"

Milled Tooth Rock Roller Bits: 4½" to 14½"

(All Kinds of bits using tungsten carbon)

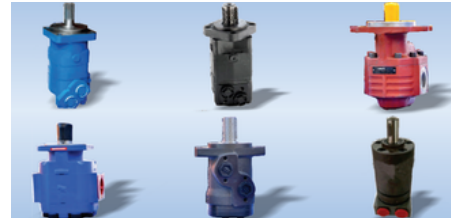
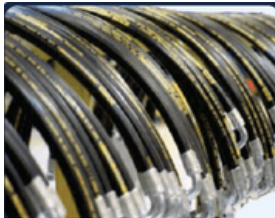
Drag bits are used for the same manner and for the same purpose as milled tooth rock bits.

**Available Sizes : 5" TO 28"**

## Drag Bits



## Hydraulic Valve, O-rings, Seal kits, Adaptors, Hoses spares, Hydraulic Pump and Motors



**We supply all kinds and brands of hydraulic pumps, Motors, Valves and all other spares.**

## Our Motto

For the past 40 years Sony Rigs are giving the best services in the water well drilling industry to fulfill with the best quality & prompt services. We have adopted a systematic and consolidated networking channel that consists of reliable and reputed contractors, distributors, and retailers: These channels are playing an instrumental role in our success. We have revitalized our production capacity and efficient delivering process, we are now able to export to regions in Africa, Asia & the middle east. We offer products with highest standards.

## About us


Sony Rigs is now rebranded as Gunas Rigs India Private Limited, a family-owned drilling company was established in Tiruchengode, Tamilnadu State, India by Mr. N. Gunasekaran and his son Mr. Cibiraj Gunasekaran. The company originally derived from Sony Bore-Wells that have been in drilling industry since 1980 working in various private & public sector projects all over India.


Gunas Rigs is manufacturing a wide range of drilling rigs that suits various applications (Water Well Drilling, Diamond Core Drilling, Reverse Circulation Drilling, Piling & Pole Drilling, Portable Drilling). Our rigs are made suitable to mount on trucks and crawlers. We also fabricate custom-built rigs as per the exact choice of customers. Everything we do is dedicated to meeting the needs of the drilling end-users. Driven by customers requirements, Gunas Rigs design and manufacture its products around the traditions of superior quality, innovation & flexibility. By utilizing modern facilities for designing and fully integrated manufacturing processes, our end-user dreams are absolutely transformed into drilling solutions to meet the ever-increasing demands of the industry.


In a market where adapting to latest changes is traditionally slow, we have progressively improved the function & quality of our products to provide up-to-date world class performance & reliability.


Gunas Rigs approaches all its domestic & international customers with an emphasis on long term basis only, which means establishing a benevolent relationship directly with its end-users everlastingly.

- **Gunas Rigs**

 3/230D, Kuthiraipallam, Karuveppampatti,  
Tiruchengode - 637 304, Namakkal (DT),  
Tamilnadu, India.

 +91 4288 257 555

 +91 96005 35555, +91 94433 58555,  
+91 96008 83555

 sales@gunasrigs.com  
sales.gunas@gmail.com

 www.gunasrigs.com



**GUNASEKARAN  
NATARAJAN**  
(Managing Director)



**CIBIRAJ  
GUNASEKARAN**  
(Chief Executive Director)